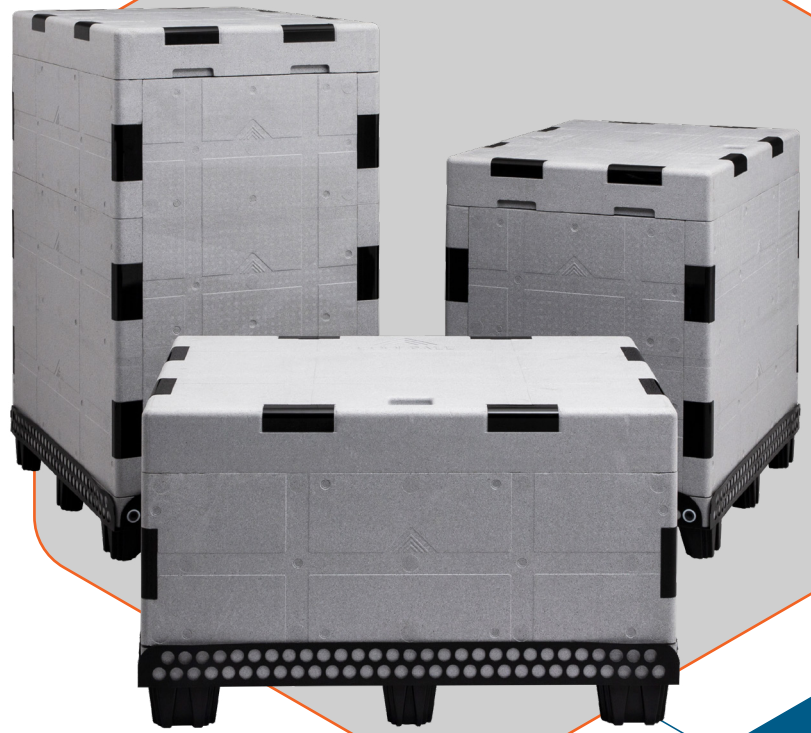




**PELI**  
**BIO THERMAL™**



# COOLPALL™ FLEX PCM

## SETTING NEW STANDARDS IN SINGLE-USE BULK SHIPPERS

CoolPall™ Flex is our range of high-performance bulk shippers, available in ISO and EURO footprints. CoolPall™ Flex is highly customisable, allowing users to tailor their shipper to specific shipping lanes or performance requirements, to achieve the optimal thermal protection at lowest overall cost. CoolPall™ Flex PCM comprises polystyrene and VIP (in base) insulation, together with high performance PCM coolants in single or double configurations, in 3 different sizes (narrow bodied aircraft, half height, full height).

## WHY CHOOSE COOLPALL™ FLEX PCM?

- A new approach in the design of bulk shippers
- Performance in excess of 140 hours
- Features PCM coolants for high performance
- Double pod versions available for increased duration
- Narrow Bodied Aircraft, Half Height and Full Height options
- Payload volumes from 150L to 757L
- ISO & EURO footprints available
- Optimised for ULD use for air cargo applications
- Qualified to ISTA7D Profiles
- Also available in Advance (PCM / VIP) versions for higher performance



## COOLPALL™ FLEX PCM



**DURATION**  
140 + HOURS



### TEMPERATURE

**SERIES 4**  
+2°C to +8°C

**SERIES 18-24**  
+15°C to +25°C

**SERIES 20M**  
-20°C



**VOLUME**  
150L – 757L



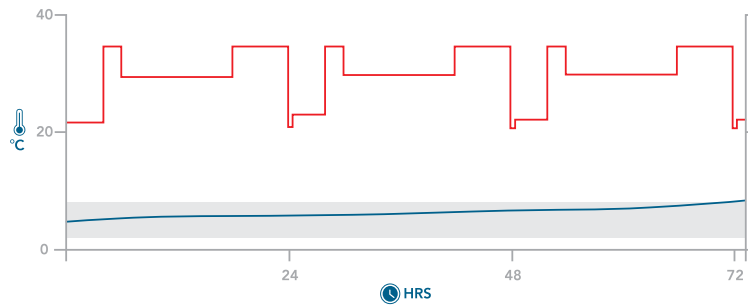
# COOLPALL FLEX™ PCM PRODUCT SPECIFICATION

Product	Litres	Exterior Dimensions WxDxH		Interior Dimensions WxDxH		Tare Weight		
		mm	inches	mm	inches	kg	lbs	
<b>EURO PALLET</b>	Single Pod NBA	175	1210 x 802 x 717	47.6 x 31.5 x 28.2	928 x 530 x 356	36.5 x 20.8 x 14.1	47.6	104.7
	Double Pod NBA	150	1210 x 802 x 717	47.6 x 31.5 x 28.2	928 x 455 x 356	36.5 x 17.9 x 14.1	67.9	149.3
	Single Pod HH	359	1210 x 802 x 1110	47.6 x 31.5 x 43.7	928 x 530 x 729	36.5 x 20.8 x 28.7	68.8	151.3
	Double Pod HH	308	1210 x 802 x 1110	47.6 x 31.4 x 43.7	928 x 455 x 729	36.5 x 17.9 x 28.7	96.5	212.3
	Single Pod FH	549	1210 x 802 x 1501	47.6 x 31.5 x 59	928 x 530 x 1117	36.5 x 20.8 x 43.9	90	198
	Double Pod FH	472	1210 x 802 x 1501	47.6 x 31.5 x 59	928 x 455 x 1117	36.5 x 17.9 x 43.9	129.3	284.4
<b>ISO PALLET</b>	Single Pod NBA	241	1210 x 1002 x 717	47.6 x 39.4 x 28.2	928 x 730 x 356	36.5 x 28.7 x 14.1	70.9	155.9
	Double Pod NBA	216	1210 x 1002 x 717	47.6 x 39.4 x 28.2	928 x 655 x 356	36.5 x 25.7 x 14.1	82	180.4
	Single Pod HH	494	1210 x 1002 x 1110	47.6 x 39.4 x 43.7	928 x 730 x 729	36.5 x 28.7 x 28.7	92.5	203.5
	Double Pod HH	443	1210 x 1002 x 1110	47.6 x 39.4 x 43.7	928 x 655 x 729	36.5 x 25.7 x 28.7	113.1	248.8
	Single Pod FH	757	1210 x 1002 x 1501	47.6 x 39.4 x 59	928 x 730 x 1117	36.5 x 25.7 x 43.9	114.1	251
	Double Pod FH	679	1210 x 1002 x 1501	47.6 x 39.4 x 59	928 x 655 x 1117	36.5 x 25.7 x 43.9	144.2	317.2

## ADDITIONAL DATA

### Series 4 CoolPall™ Flex Advance Half Height Single Pod

Single Layer ISO +2°C to +8°C ISTA7D HOT 68 hours



FOR MORE INFORMATION ABOUT PELI BIOTHERMAL PRODUCTS [CLICK HERE](#)

FOR MORE INFORMATION ABOUT PELI BIOTHERMAL PRODUCTS, PLEASE CONTACT:

EMEA OFFICE - [INFOEMEA@PELIBIOTHERMAL.COM](mailto:INFOEMEA@PELIBIOTHERMAL.COM) T: +44 (0)1525 243 770

AMERICAS OFFICE - [INFOAMERICAS@PELIBIOTHERMAL.COM](mailto:INFOAMERICAS@PELIBIOTHERMAL.COM) T: +1(763) 412-4800 TOLL FREE US: T: +(877) 537-9800

ASIA OFFICE - [INFOASIA@PELIBIOTHERMAL.COM](mailto:INFOASIA@PELIBIOTHERMAL.COM) T: +65 6681 0095

[PELIBIOTHERMAL.COM](http://PELIBIOTHERMAL.COM)

ISO17025, ISO9001-2008 Accredited

Golden Hour™, TIC™, Crêdo™, Crêdo Cube™, Crêdo ProEnvision™, Crêdo Xtreme™, Crêdo Duracube™, Crêdo ProMed™, Sherpa Systems™, CoolGuard™ and CoolPall™ are registered trademarks of Pelican Products Inc., its subsidiaries and / or affiliates



©2022 Peli BioThermal Ltd all rights reserved